

A new Waste Management System in Georgia

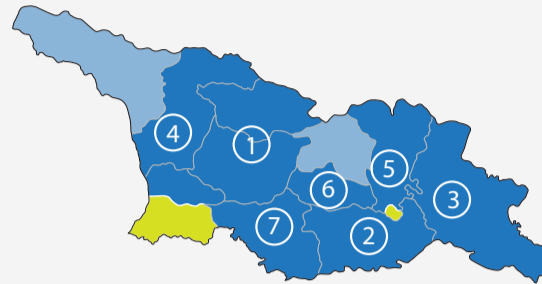
Steps towards safe and efficient Waste Disposal

Vision / Scenario for then National Waste Management System in 2015

The Company has created a single effective waste disposal system on national level and has developed a network of regional sanitary landfills and connected transfer stations. A waste separation and recycling system is introduced and effectively working.

Solid Waste Management Company of Georgia - Vision / Scenario 2025

Seven regional landfills except Tbilisi and Adjara a/c



The 7 regional landfills that will be constructed and operated by SWMCG will serve over 60 % of the Georgian population, about 2.3 million citizens.

Huge landfills close to big cities and transfer stations

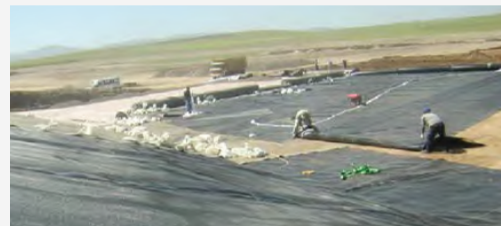


Regional landfills serve several hundred thousands of citizens. They are positioned close to big cities where huge quantities of waste are produced. Remote rural areas are connected through transfer stations.

The technology nowadays used for constructing the sealing layers and installing the leachate drainage systems on the ground level of a landfill are tested and proved now for decades in many countries all over the world.



Shape & Compact the landfill basin



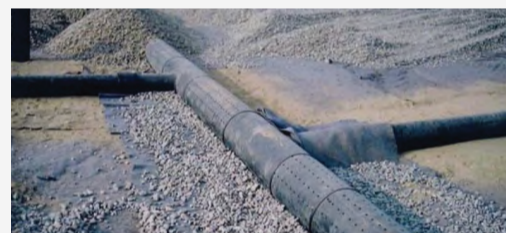
Complete coverage of the landfill basin with foil



Weld & Check



Protective membrane & 50 cm gravel layer



Leachate drain pipes under gravel in sand bed

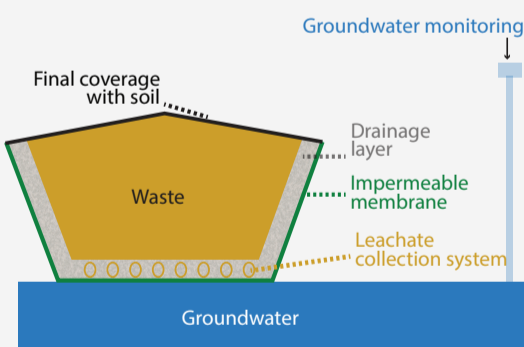


Leachate outflow pipe carefully welded into foil

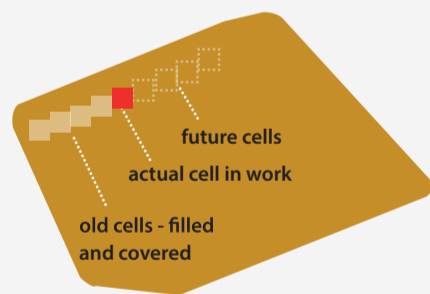
Strict avoidance of ground water pollution

Efficient and environmentally friendly operation

Roles and Responsibilities of the main partners in the new Georgian Waste Management System



A modern landfill is like a bathtub, absolutely impermeable, with controlled outflow. The outflowing leachate is collected in a sealed, impermeable basin and then cleaned through a highly efficient cleaning technology called 'reverse osmosis'.



In a modern landfill the size of the area, where waste is visible - this is called the 'cell' - is very small in relation to the total surface of the landfill. This means minimum smell and less birds, rodents etc.



Citizens / Companies

Municipalities

SWMCG

- First and foremost responsibility is to AVOID WASTE!
- Separate waste
- Compost biodegradable waste

- Collect waste
- Elaborate municipal waste management plans
- Inform and raise public awareness for separation at source
- Efficient waste tariff collection systems

- Dispose waste from municipalities and private sector
- Construct up to 7 regional landfills
- Support municipalities
- Assure involvement of all regional stakeholders
- Inform and raise public awareness

InfoWall / RollUp Banner Number 2 out of 3
/ Original Size: 1500 x 2000 mm
Originally 2 sets /
Can be used for workshops, information events, exhibitions
in municipalities and other public places.